

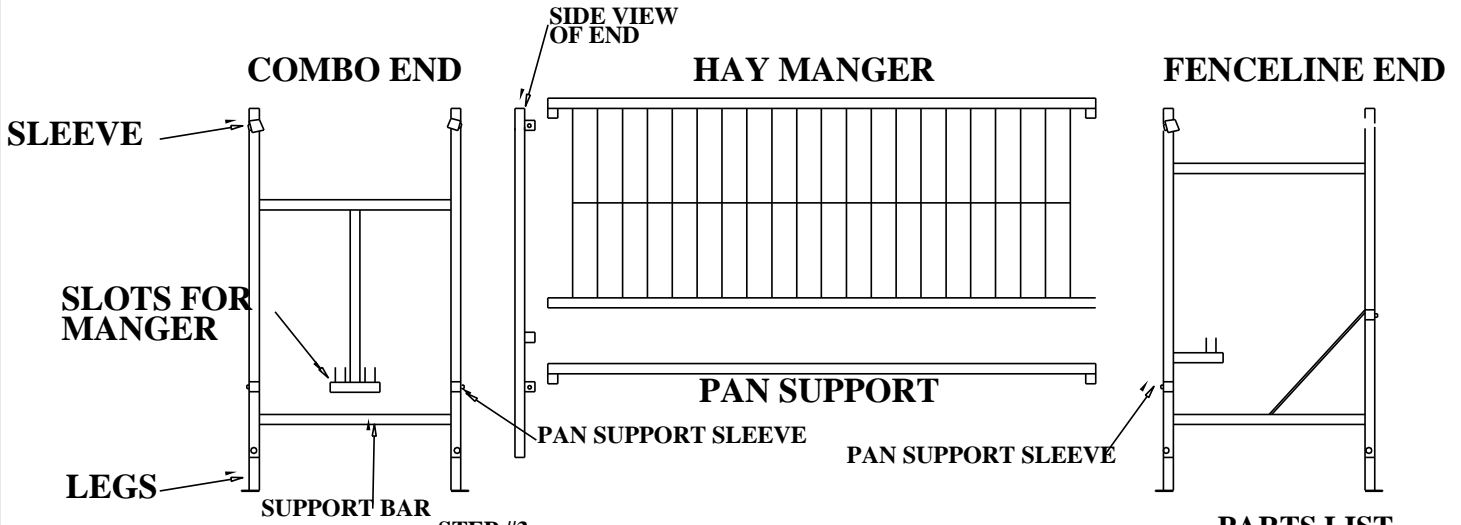
ASSEMBLY INSTRUCTIONS FOR SHEEP COMBO AND FENCELINE FEEDERS

STEP #1

INSERT 12" LEGS INTO BOTH ENDS AND SET AT DESIRED HEIGHT.

STEP #2

INSERT THE 2 PAN SUPPORTS INTO THE PAN SUPPORT SLEEVES ON ONE END.



STEP #3

SET GALVANIZED PAN ON SUPPORT BAR.

STEP #4

PLACE THE GALVANIZED PAN ON THE PAN SUPPORT BAR OF THE SECOND END AND DROP THE PAN SUPPORT INTO IT'S SLEEVE.

STEP #5

CENTER THE PAN ON THE SUPPORT BARS.

STEP #6

USE HOSE CLAMPS TO ATTACH PAN TO THE PAN SUPPORTS.

STEP #7

PLACE THE HAY MANGER (S) INTO THE SLEEVES AND BOTTOM SLOT.

STEP #8

SECURE ALL SET BOLTS AND HOSE CLAMPS.

2X4 TREATED LUMBER CAN BE USED AS SKIDS.

WHEN ADDING ADD-ON SECTIONS, REMOVE ONE SOLID END AND CONTINUE WITH ABOVE SETS.

PARTS LIST

COMBO FEEDER

- 2-SOLID ENDS
- 2-PAN SUPPORTS
- 2-HAY MANAGERS
- 12-HOSE CLAMPS
- 4-12" LEGS
- 1-PAN
- 1-INSTRUCTION

FENCELINE FEEDER

- 2-SOLID ENDS
- 2-PAN SUPPORTS
- 1-HAY MANGER
- 12-HOSE CLAMPS
- 4-12" LEGS
- 1-PAN
- 1-INSTRUCTION



SYDELL INC.

46935 SD Hwy. 50

Burbank, SD 57010

(605) 624-4538

www.sydell.com

email: sydell@sydell.com