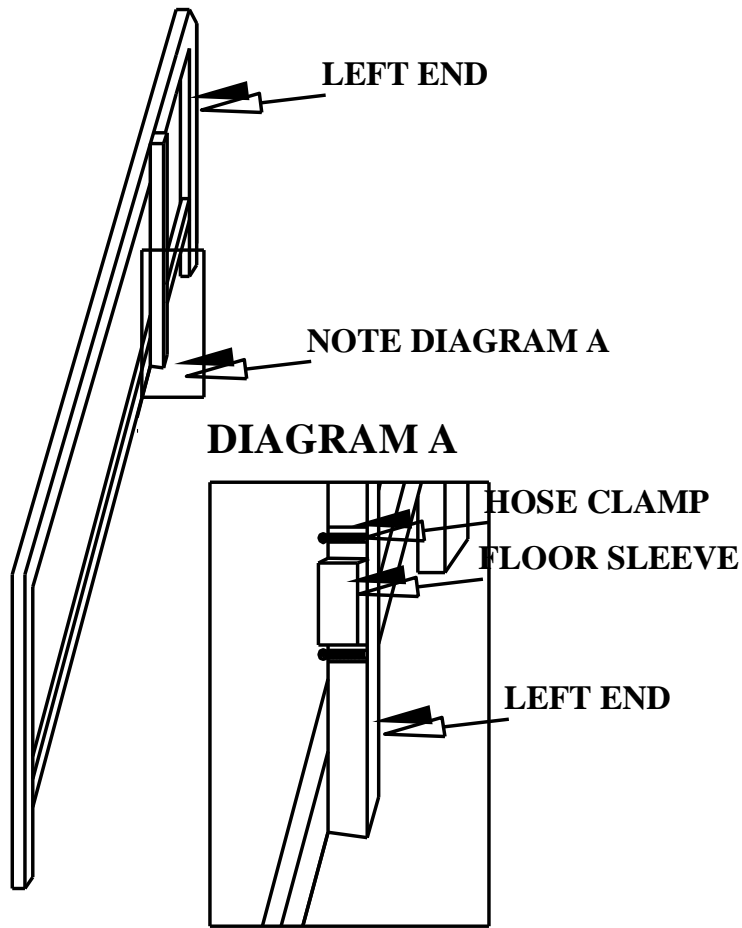


#741 FLOOR SUPPORT INSTRUCTIONS



STEP #1

ATTACH ADJUSTABLE FLOOR SUPPORT SLEEVES TO EACH OF THE RIGHT AND LEFT ENDS AS SHOWN WITH HOSE CLAMPS.

NOTE: THESE SLEEVES CAN BE ADJUSTED FOR DESIRED FLOOR HEIGHT

STEP #2

SLIDE FLOOR SUPPORT BAR INTO FLOOR SUPPORT SLEEVES.

STEP #3

PLACE PLASTIC FLOORS ONTO FLOOR SUPPORT TABS.

