

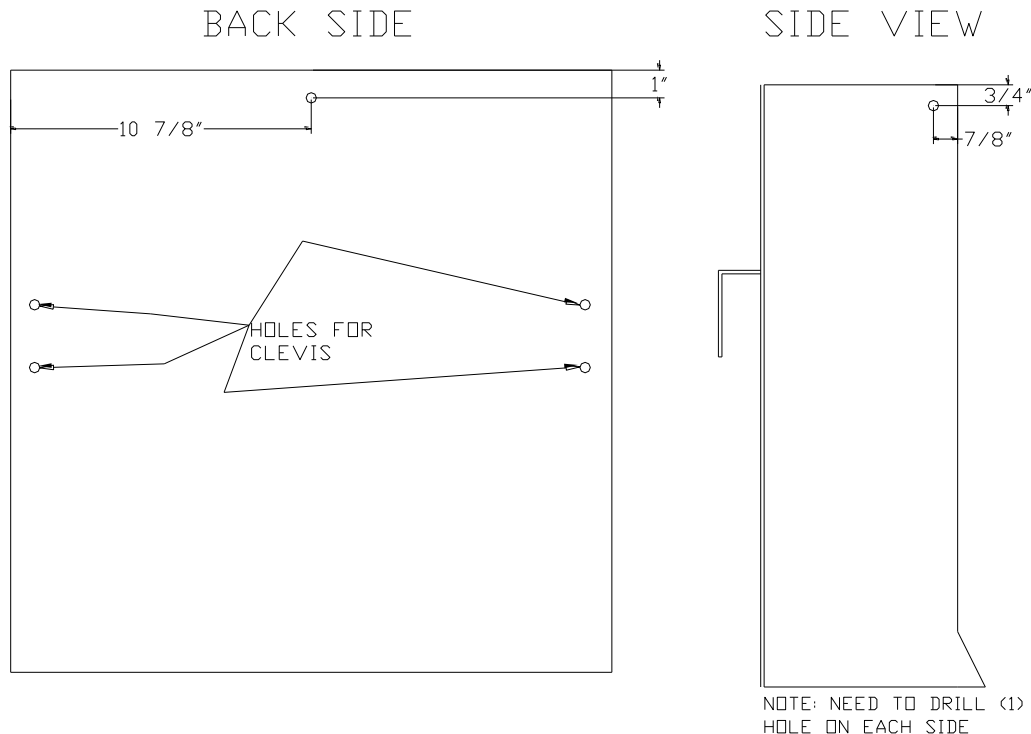


# ASSEMBLY INSTRUCTIONS FOR #201-LID POLY LID FOR #201 POLY HAY/GRAIN FEEDER



If you purchased your #201 Poly Hay/Grain Feeder before June 2010 you will first need to drill (3) 3/8" holes in your feeder. See Diagram A for location of the holes.

## DIAGRAM A



## ASSEMBLY INSTRUCTIONS FOR #201-LID

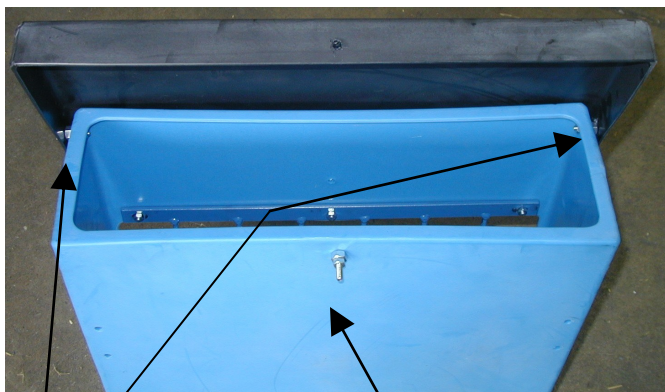
### STEP #1

Attach the lid to the #201 feeder using (2) 1/4" x 1 1/4" bolts, (4) 1/4" washers, (2) 1/4" nuts, and (2) 3/8" nut spacers (SEE DIAGRAM B and B-1)

### STEP #2

Attach lid holder bolt using (1) 1/4" x 1 1/2" bolt, (1) 1/4" washer, (1) 1/4" nut, and (1) 3/8" nut spacer (SEE DIAGRAM B)

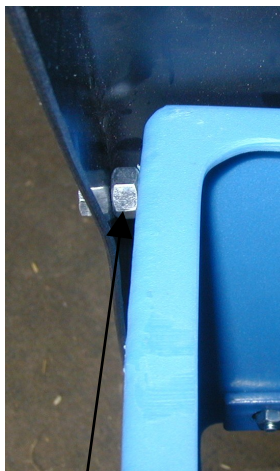
DIAGRAM B



Attachment point for lid. See Diagram B-1 for more detail

**Step #2**  
Lid holder bolt assembly.  
Note: washer is on the inside with 3/8" nut spacer on the outside

DIAGRAM B-1



3/8" nut spacer between lid and poly feeder. Note: need washer on outside of lid, and inside of poly feeder



Finished lid assembled and latched with bolt on the back.